

SUCO 舒畅®

浙江古月胡工贸有限公司
ZHEJIANG GUYUEHU INDUSTRY&TRADE CO.,LTD

SUCO 舒畅®
MAKE YOUR WORK EASIER

轻松工作 我选舒畅
MAKE YOUR WORK EASIER

农业工具
Agriculture Tools



园林工具
Garden Tools



切削工具
Cutting tools



液压工具
Electric Hydraulic Tools



浙江古月胡工贸有限公司

地址 浙江省永康市西城街道西塔三路25号 电话 0579-87213390 手机 13566792218 网址 www.suca88.com

ZHEJIANG GUYUEHU INDUSTRY & TRADE CO.,LTD

Add No. 25, Xita 3rd Road, Xicheng Street, Yongkang, Zhejiang

Tel 0086-579-87526536 Sales line 0086-15088234363 E-mail info@sucatool.com Website www.sucatool.com

SUCO



公司介绍:

浙江古月胡工贸有限公司成立于2003年,是国家高新技术企业,全国农业机械标准化技术委员会委员单位,电动修枝剪行业国家标准起草单位,拥有现代化厂房面积30000平方米,员工200多人,其中研发技术人员占比25%。公司主要产品有电动修枝剪、电锯、割草机、吹风机、绑枝机、嫁接机、带锯、液压工具等。工厂已通过BSCI验厂、ISO9001认证,公司拥有专业的测试实验室,产品均通过CE、ROHS等国际认证,并获得了80多项专利。我们的品牌SUCA舒畅、犀克,多年来在国内外工具领域取得了优异的成绩,我们也提供专业的OEM&ODM服务。目前公司产品销往欧盟、北美、南美、俄罗斯、东南亚等100多个国家和地区。

公司以“制造安全、环保、节能、智能的工具”为使命,以消费者需求为导向,以专业化的服务面向全球市场。利用我们专业的研发团队优势,推动工具行业的发展,致力于成为工具行业的龙头企业。

About Us:

ZHEJIANG GUYUEHU INDUSTRY & TRADE CO.,LTD.,founded in 2003, is a national high-tech enterprise,the member of the National Agricultural Machinery Standardization Technical Committee unit,and the national standard drafting unit of electric pruning shears industry.Our factory has 30,000 square meters, more than 200 employees, Among them, R&D technicians account for 25%.the main products are electric pruning shears, chainsaw, lawn mower, leaf blower, tapetool, grafting tool, bandsaw, hydraulic tools and so on. Our factory has passed BSCI, ISO9001.The company has a professional testing laboratory, all products have passed CE, ROHS and other international certificates, and obtained more than 40 patents.We provide professional OEM&ODM services. Now the company's products have been sold to the EU, North America, South America, Russia, Southeast Asia and other more than 100 countries and regions.

With the mission of "manufacturing safety, environmental protection, energy conservation, intelligent tools", with consumer demand as the guide, with professional service for the global market. Take advantage of our professional R & D team to promote the development of the tool industry, and strive to become a benchmark in the tool industry.

SUCA 舒畅
MAKE YOUR WORK EASIER

电动修枝剪 Electric Pruning Shear

最大剪切直径22mm
Cutting Diameter: 0-22mm



- ★ 带高清液晶屏
With HD digital display
- ★ 剪切次数
Cutting number
- ★ 芯片实时温度
Chip real-time temperature

型号(Model): SC-8620A

剪切范围 (Cutting Diameter)	0-22mm
最大功率 (Max power)	450W
充电电压 (Charger feed voltage)	110~240v
剪刀重量 (Pruner Weight)	890g
锂电池 (Li-battery)	7.2V 2Ah/4.2Ah
续航时间 (Working time)	2~3 / 4~6hours
充电时间 (Charging time)	2 / 4hours
工作环境温度 (Temperature range)	-10~50°C
装箱数量 (Package)	15pcs
装箱尺寸 (Ctn size)	59*35*32 cm

- ★ 电量显示
Power display
- ★ 缓动功能
Progressive cutting
- ★ type-c充电
Type - C charging port

型号(Model): SC-8620

SUCA 舒畅

MAKE YOUR WORK EASIER

电动修枝剪

Electric Pruning Shear



最大剪切直径25mm
Cutting Diameter: 0-25mm

型号(Model): SC-8601

剪切范围 (Cutting Diameter)	0-25mm
最大功率 (Max power)	850W
充电电压 (Charger feed voltage)	110~240v
剪刀重量 (Pruner Weight)	690g
锂电池重量 (Battery Weight)	220g
锂电池 (Li-battery)	16.8V/2Ah
续航时间 (Working time)	2~3 hours
充电时间 (Charging time)	1.5~2hours
工作环境温度 (Temperature range)	-10~50°C
装箱数量 (Package)	10pcs
装箱尺寸 (Ctn size)	62*36.5*24.5cm

SUCA 舒畅

MAKE YOUR WORK EASIER

电动修枝剪

Electric Pruning Shear



可配加长杆

The shear can be used
with extension bar

最大剪切直径28mm
Cutting Diameter: 0-28mm

型号(Model): SC-8603

剪切范围 (Cutting Diameter)	0-28mm
最大功率 (Max power)	850W
充电电压 (Charger feed voltage)	110~240v
剪刀重量 (Pruner Weight)	690g
锂电池重量 (Battery Weight)	220g
锂电池 (Li-battery)	16.8V/2Ah
续航时间 (Working time)	2~3 hours
充电时间 (Charging time)	1.5~2hours
工作环境温度 (Temperature range)	-10~50°C
装箱数量 (Package)	10pcs
装箱尺寸 (Ctn size)	59*42*26cm



SUCO 舒畅

MAKE YOUR WORK EASIER

电动修枝剪

Electric Pruning Shear

最大剪切直径28mm

Cutting Diameter: 0-28mm



高清液晶屏
HD digital display

电量显示
Power display

剪切次数
Cutting number

型号(Model): SC-8604A

剪切范围 (Cutting Diameter)	0-28mm
最大功率 (Max power)	850W
充电电压 (Charger feed voltage)	110~240v
剪刀重量 (Pruner Weight)	690g
锂电池重量 (Battery Weight)	220g
锂电池 (Li-battery)	16.8V/2Ah
续航时间 (Working time)	2~3 hours
充电时间 (Charging time)	1.5~2hours
工作环境温度 (Temperature range)	-10~50°C
装箱数量 (Package)	10pcs
装箱尺寸 (Ctn size)	59*42*26cm



型号(Model): SC-8604

SUCO 舒畅

MAKE YOUR WORK EASIER

电动修枝剪

Electric Pruning Shear



最大剪切直径28mm

Cutting Diameter: 0-28mm

电量显示
Power display



型号(Model): SC-8607

剪切范围 (Cutting Diameter)	0-28mm
最大功率 (Max power)	850W
充电电压 (Charger feed voltage)	110~240v
剪刀重量 (Pruner Weight)	690g
锂电池重量 (Battery Weight)	220g
锂电池 (Li-battery)	16.8V/2Ah
续航时间 (Working time)	2~3 hours
充电时间 (Charging time)	1.5~2hours
工作环境温度 (Temperature range)	-10~50°C
装箱数量 (Package)	10pcs
装箱尺寸 (Ctn size)	62*36.5*24.6cm



电动修枝剪
Electric Pruning Shear

最大剪切直径28mm
Cutting Diameter: 0-28mm



型号(Model): SC-8610

剪切范围 (Cutting Diameter)	0-28mm
最大功率 (Max power)	850W
充电电压 (Charger feed voltage)	110~240v
剪刀重量 (Pruner Weight)	690g
锂电池重量 (Battery Weight)	220g
锂电池 (Li-battery)	16.8V/2Ah
续航时间 (Working time)	2~3 hours
充电时间 (Charging time)	1.5~2hours
工作环境温度 (Temperature range)	-10~50°C
装箱数量 (Package)	10pcs
装箱尺寸 (Ctn size)	59*42*26cm

可配加长杆
The shear can be used with extension bar



型号(Model): SC-8610A



高清液晶屏
HD digital display

电量显示
Power display

剪切次数
Cutting number

电动修枝剪
Electric Pruning Shear

最大剪切直径30mm
Cutting Diameter: 0-30mm



型号(Model): SC-8602B

剪切范围 (Cutting Diameter)	0-30mm
最大功率 (Max power)	970W
充电电压 (Charger feed voltage)	110~240v
剪刀重量 (Pruner Weight)	900g
锂电池重量 (Battery Weight)	330g
锂电池 (Li-battery)	21V/2Ah
续航时间 (Working time)	3~4 hours
充电时间 (Charging time)	1.5~2 hours
工作环境温度 (Temperature range)	-10~50°C
装箱数量 (Package)	6pcs
装箱尺寸 (Ctn size)	48.5*34*31.5cm



型号(Model): SC-8602

电动修枝剪 Electric Pruning Shear

最大剪切直径32mm
Cutting Diameter: 0-32mm



高清液晶屏
HD digital display
电量显示
Power display
剪切次数
Cutting number
缓动功能
Progressive cutting

型号(Model): SC-8608

剪切范围 (Cutting Diameter)	0-32mm
最大功率 (Max power)	900W
充电电压 (Charger feed voltage)	110~240v
剪刀重量 (Pruner Weight)	740g
锂电池重量 (Battery Weight)	260g/360g
锂电池 (Li-battery)	16.8V 2AH / 16.8V 4AH
续航时间 (Working time)	2-3 / 4-6 hours
充电时间 (Charging time)	2~2.5 hours
工作环境温度 (Temperature range)	-10~50°C
装箱数量 (Package)	6pcs
装箱尺寸 (Ctn size)	57*44*32 cm

可配加长杆
The shear can be used
with extension bar



型号(Model): SC-8608A

电动修枝剪 Electric Pruning Shear

最大剪切直径32mm
Cutting Diameter: 0-32mm



高清液晶屏
HD digital display
电量显示
Power display
剪切次数
Cutting number
缓动功能
Progressive cutting

型号(Model): SC-8608B

剪切范围 (Cutting Diameter)	0-32mm
最大功率 (Max power)	900W
充电电压 (Charger feed voltage)	110~240v
剪刀重量 (Pruner Weight)	740g
锂电池重量 (Battery Weight)	260g/360g
锂电池 (Li-battery)	16.8V 2AH / 16.8V 4AH
续航时间 (Working time)	2-3 / 4-6 hours
充电时间 (Charging time)	2~2.5 hours
工作环境温度 (Temperature range)	-10~50°C
装箱数量 (Package)	6pcs
装箱尺寸 (Ctn size)	57*44*32 cm

可配加长杆
The shear can be used
with extension bar



型号(Model): SC-8608C

电动修枝剪
Electric Pruning Shear

最大剪切直径32mm
Cutting Diameter: 0-32mm

电量显示
Power display



型号(Model): SC-8609

剪切范围 (Cutting Diameter)	0-32mm
最大功率 (Max power)	970W
充电电压 (Charger feed voltage)	110~240v
剪刀重量 (Pruner Weight)	900g
锂电池重量 (Battery Weight)	330g
锂电池 (Li-battery)	21V/2Ah
续航时间 (Working time)	3~4 hours
充电时间 (Charging time)	1.5~2 hours
工作环境温度 (Temperature range)	-10~50°C
装箱数量 (Package)	6pcs
装箱尺寸 (Ctn size)	48.5*34*31.5cm



电动修枝剪
Electric Pruning Shear

最大剪切直径40mm
Cutting Diameter: 0-40mm

可配加长杆
The shear can be used
with extension bar

电量显示
Power display

缓动功能
Progressive cutting



型号(Model): SC-8605

剪切范围 (Cutting Diameter)	0-40mm
最大功率 (Max power)	1050W
充电电压 (Charger feed voltage)	110~240v
剪刀重量 (Pruner Weight)	970g
锂电池重量 (Battery Weight)	330g
锂电池 (Li-battery)	21V/2Ah
续航时间 (Working time)	2~3 hours
充电时间 (Charging time)	1.5~2 hours
工作环境温度 (Temperature range)	-10~50°C
装箱数量 (Package)	6pcs
装箱尺寸 (Ctn size)	48.5*34*31.5cm



电动修枝剪 Electric Pruning Shear

最大剪切直径40mm
Cutting Diameter: 0-40mm



电量显示
Power display



高清液晶屏
HD digital display

电量显示
Power display

剪切次数
Cutting number

缓动功能
Progressive cutting

型号(Model): SC-8611

剪切范围 (Cutting Diameter)	0-40mm
最大功率 (Max power)	1050W
充电电压 (Charger feed voltage)	110~240v
剪刀重量 (Pruner Weight)	970g
锂电池重量 (Battery Weight)	310g/450g
锂电池 (Li-battery)	21V 2Ah / 21V 4Ah
续航时间 (Working time)	2~3 / 4~6 hours
充电时间 (Charging time)	2~2.5hours
工作环境温度 (Temperature range)	-10~50°C
装箱数量 (Package)	6pcs
装箱尺寸 (Ctn size)	57*44*32 cm

可配加长杆
The shear can be used
with extension bar



型号(Model): SC-8611A

电动修枝剪 Electric Pruning Shear

最大剪切直径45mm
Cutting Diameter: 0-45mm



★带高清液晶屏
With HD digital display

★电量显示
Power display

★剪切次数
Cutting number

型号(Model): SC-8612A

★缓动功能
Progressive cutting

★随意调节张口大小
the opening size can
be adjusted at will.

★可配加长杆使用
The shear can be used
with extension bar

型号(Model): SC-8612

剪切范围 (Cutting Diameter)	0-45mm
最大功率 (Max power)	1150W
充电电压 (Charger feed voltage)	110~240v
剪刀重量 (Pruner Weight)	1030g
锂电池重量 (Battery Weight)	515g
锂电池 (Li-battery)	25.2V 4Ah
续航时间 (Working time)	4~6 hours
充电时间 (Charging time)	3~4hours
工作环境温度 (Temperature range)	-10~50°C
装箱数量 (Package)	6pcs
装箱尺寸 (Ctn size)	57*44*32 cm



SUCA 舒畅
MAKE YOUR WORK EASIER

SUCA 舒畅

MAKE YOUR WORK EASIER

背负式电动修枝剪
Knapsack electric pruning shears set

型号(Model): SC-8612-2

可配加长杆
The shear can be used with extension bar



连接线
Connecting wire
型号(Model): SC-3002

工作腰包
Work Fanny pack
型号(Model): SC-3201

适用于SC-8608, SC-8611, SC-8612, SC-5803, SC-5804
Used with SC-8608, SC-8611, SC-8612, SC-5803, SC-5804

电动修枝剪 Electric Pruning Shear

最大剪切直径40mm
Cutting Diameter : 0-40mm

可配加长杆
The shear can be used with extension bar

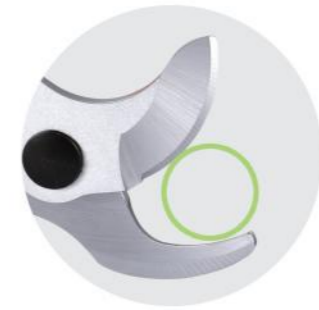


型号(Model): SC-3608

剪切范围 (Cutting Diameter)	0-40mm
最大功率 (Max power)	1080W
转速 (SPEED)	20000r/min
剪刀重量 (Weight)	0.9kg
锂电池 (Li-battery)	36V/4Ah
装箱数量 (Package)	4pcs

锂电池重量 (Battery Weight)	1.3kg
充电电压 (Charger feed voltage)	110~240v
续航时间 (Working time)	10 hours
充电时间 (Charging time)	3-4hours
工作环境温度 (Temperature range)	-10~50°C
装箱尺寸 (Ctn size)	50*48*33.5cm

电动修枝剪 Electric Pruning Shear



最大剪切直径45mm
Cutting Diameter : 0-45mm

可配加长杆
The shear can be used with extension bar



型号: SC-3602

剪切范围 (Cutting Diameter)	0-45mm
剪切速度 (Cutting Speed)	48/min
剪刀重量 (Weight)	0.97kg
锂电池 (Li-battery)	36V/4Ah
装箱数量 (Package)	4pcs

锂电池重量 (Battery Weight)	1.3kg
充电电压 (Charger feed voltage)	110~240v
使用时间 (Battery pack autonomy)	10 hours
充电时间 (Charging time)	3-4hours
装箱尺寸 (Ctn size)	50*48*33.5cm



电动修枝剪加长杆 Electric Pruning Shear Extension bar

1.5-2.1米自由伸缩

Telescopic range 1.5 - 2.1m

型号(Model): SC-8606

适用于SC-8603 SC-8610

This extension is used with
SC-8603 SC-8610

包装数量 (Package): 1pc

包装尺寸 (Ctn size): 133*7*12.5cm



电动修枝剪加长杆 Electric Pruning Shear Extension bar

1.5-2.1米自由伸缩
Telescopic range 1.5 - 2.1m



型号(Model): SC-7605

适用于SC-8605

This extension is used with SC-8605

包装数量 (Package) : 1pc

包装尺寸 (Ctn size) : 133*7*12.5cm

电动修枝剪加长杆 Electric Pruning Shear Extension bar

1.5-2.1米自由伸缩
Telescopic range 1.5 - 2.1m



型号(Model): SC-7612

适用于SC-8608/8611/8612/5803/5804

This extension is used with SC-8608/8611/8612/5803/5804

SUCO 舒畅

MAKE YOUR WORK EASIER

锂电链锯

Mini chainsaw



型号(Model): SC-5802

额定功率 (Power) :	400W
最大锯切直径(Max cutting diameter):	180mm
链条 (Chain size)	3/8" 33E
锯链线速度(Chain speed):	11m/s
驱动锯链轮(Chain sprocket):	7 teeth
链轮转速 (Rotation speed)	5200 rpm
导板 (Guide) :	8"
导板厚度 (Thickness of the guide) :	5mm
机身重量(Machine weight):	1.5kg
锂电池规格(Li-battery):	21V/4A
锂电池重量(Battery weight) :	0.6kg
充电时间(Charging time):	2hours
续航时间(Working time):	60mins
装箱数量(Package):	4pcs
装箱尺寸(Ctn size):	50*48*33.5cm



- ★ 无刷电机
Brushless motor
- ★ 全钢齿轮箱
All steel gearbox

SUCO 舒畅

MAKE YOUR WORK EASIER

锂电链锯

Mini chainsaw



润滑油系统
lubrication system

型号(Model): SC-5802B

额定功率 (Power) :	400W
最大锯切直径(Max cutting diameter):	180mm
链条 (Chain size) :	1/4"48E 3/8"33E
锯链线速度(Chain speed):	11m/s
驱动锯链轮(Chain sprocket):	7 teeth
链轮转速 (Rotation speed)	5200 rpm
导板 (Guide) :	8"
导板厚度 (Thickness of the guide) :	5mm
机身重量(Machine weight):	1.5kg
锂电池规格(Li-battery):	21V/4A
锂电池重量(Battery weight) :	0.6kg
充电时间(Charging time):	2hours
续航时间(Working time):	60mins
装箱数量(Package):	4pcs
装箱尺寸(Ctn size):	50*48*33.5cm



- ★ 无刷电机
Brushless motor
- ★ 全钢齿轮箱
All steel gearbox

SUCO 舒畅

MAKE YOUR WORK EASIER

锂电链锯

Mini chainsaw

可配加长杆

The saw can be used with extension bar



- ★ 带高清数显屏
With HD digital display
- ★ 锯链线速度
Speed
- ★ 使用时间
Working time
- ★ 电量显示
Power display
- ★ 无刷电机
Brushless motor
- ★ 全钢齿轮
All steel gear

型号(Model): SC-5803A

额定功率 (Power) :	350W
最大锯切直径(Max cutting diameter):	120mm
链条 (Chain size) :	1/4" 32E 1/4" 38E
锯链线速度(Chain speed):	6.2m/s
驱动锯链轮(Chain sprocket):	7 teeth
链轮转速 (Rotation speed)	4000 rpm
导板 (Guide) :	5" / 6"
导板厚度 (Thickness of the guide) :	3.2mm
机身重量(Machine weight):	880g
锂电池规格(Li-battery):	16.8V 2AH / 16.8V 4AH
锂电池重量(Battery weight) :	260g/360g
充电时间(Charging time):	2~3hours
续航时间(Working time):	30-60mins



- ★ 润滑油系统
lubrication system

型号(Model): SC-5803

SUCO 舒畅

MAKE YOUR WORK EASIER

锂电链锯

Mini chainsaw



泉友接口可用

Quanyou interface available

型号(Model): SC-5804

额定功率(Power):	500W
最大锯切直径(Max cutting diameter):	90mm/130mm/180mm
链条(Chain size):	1/4"32E 1/4"38E 1/4"45E
锯链线速度(Chain speed):	7.8m/s
驱动锯链轮(Chain sprocket):	7teeth
链轮转速(Rotation speed):	5300rpm
导板(Guide):	5"/6"/8"
导板厚度(Thickness of the guide):	3.2mm
机身重量(Machine weight):	900g
锂电池规格(Li-battery):	21V 2Ah/21V 4Ah
锂电池重量(Battery weight):	310g/450g
充电时间(Charging time):	2-4hours
续航时间(Working time):	30-60mins



- ★ 无刷电机
Brushless motor
- ★ 全钢齿轮
All steel gear
- ★ 可配加长杆
The saw can be used with extension bar

锂电割草机 Cordless grass trimmer

- ★ 自制外转子无刷电机，独特的冷却排风，功率达到32cc引擎的功率

Strong power : Self-built outer rotor brushless motor, with the unique cooling vent, delivers the power of a 32cc gas engine

- ★ 三档调速，可以满足不同场合和切割头使用
Easy control : 3 speed options (Low: 3,500 RPM, Medium: 5,000 RPM, High: 6,500 RPM) for power management

- ★ 敲击出线，打草头易于换线、绕线
Convenience : 3 easy steps to load line into bump and feed trimmer head; align, feed and twist

- ★ 重量轻，易于操作不疲劳
Light weight: only 3.8Kg, easy operation

- ★ 带高清数显屏
With HD digital display



SC-6201A

型号(Model): SC-6201

最大功率 (Max Power) :	1200W
转速 (Speed) :	6500/5000/3500RPM
机身重量(Machine weight):	3.8kg
锂电池规格(Li-battery):	40V 2/4/8/20Ah
锂电池重量(Battery weight) :	0.8/1.3/1.8/5.8kg
充电电压(Charging Voltage):	110-240V
充电时间(Charging time):	1-2hours
续航时间(Working time):	25/50/100/250min
割灌直径 (Blade Diameter)	255mm
打草直径 (Trimming Diameter)	350mm

锂电多功能头 Cordless Power head kit

- ★ 无刷电机
Brushless motor

- ★ 带高清数显屏
With HD digital display



SC-6202A

型号(Model): SC-6202

最大功率 (Max Power) :	1500W
转速 (Speed) :	8000/7000/6000RPM
机身重量(Machine weight):	3.1kg
锂电池规格(Li-battery):	40V 2/4/8/20Ah
锂电池重量(Battery weight) :	0.8/1.3/1.8/5.8Kg
充电电压(Charging Voltage):	110-240V
充电时间(Charging time):	1-2hours
续航时间(Working time):	25/50/100/250min

可选工作头:
链锯、修枝、打草、割灌、修边、地刷、扫地、松土、咖啡采摘器

Work head attachment:
chain saw, hedge trimmer, grass trimmer, brush cutter, edger, bristle brush, paddle sweep, cultivator, coffee harvester

锂电吹风机

Cordless leaf blower

- ★ 无极调速
Stepless speed regulation
- ★ 巡航定速
Cruise control
- ★ 急速
Rapidly
- ★ 涡轮增压
Turbo



型号(Model): SC-6301

额定功率 (Power) :	650W	续航时间(Working time):	15/30/60/150min
机身重量(Machine weight):	2.3kg	风速 (wind speed) :	低速144km/h; 高速175km/h
锂电池规格(Li-battery):	40V 2/4/8/20Ah	风量 (Air volume) :	低速425cfm 高速510cfm;
锂电池重量(Battery weight) :	0.8/1.3/1.8/5.8Kg	转速 (Speed) :	低速low speed 18000RPM
充电电压(Charging Voltage):	110-240V		高速High speed 21000RPM
充电时间(Charging time):	1-2hours		

锂电链锯

Cordless chainsaw

- ★ 无刷电机
Brushless motor
- ★ 自动泵油
Automatic pump oil
- ★ 电子刹车+机械刹车
Electronic brake+Mechanical brake



型号(Model): SC-6501

额定功率 (Power) :	1440W	锂电池规格(Li-battery):	40V 2/4/8/20Ah
充电电压 (Charging voltage)	110-240V	锂电池重量(Battery weight) :	0.8/1.3/1.8/5.8Kg
锯链线速度(Chain speed):	19m/s	充电时间(Charging time):	1~2hours
导板 (Guide) :	16"/406mm	续航时间(Working time):	25/50/100/250min
机身重量(Machine weight):	3.5kg		

锂电草坪机

Battery lawn mower

型号(Model): SC-6601

额定功率 (Power) :	900W
充电电压 (Charging voltage)	110-240V
充电时间(Charging time):	1~2hours
续航时间(Working time):	25/50/100Min
锂电池规格(Li-battery):	40V 2/4/8/30Ah
锂电池重量(Battery weight) :	0.8/1/1.8/8.3Kg
机身重量(Machine weight):	16.7kg
转速 (Speed) :	3300RPM
切割直径 (Cutting diameter) :	16"/410mm.
集草袋容积 (Volume of straw bag) :	50L

- ★ 前轮7档调高
Front wheel gear 7 raised
- ★ 调高高度35mm-85mm
Height adjustment 35mm-85mm



锂电池

Li-battery

型号(Model)	容量 (Capacity)	重量 (Weight)
6006	40V 4Ah	1.3Kg
6002	40V 8Ah	1.8Kg
6003	40V 2Ah	0.8Kg
6009	40V 20Ah	5.8Kg



充电式液压钳 Battery Crimping Tool



- ★ 电量显示
Power display
- ★ 计数显示
Counting display
- ★ 永磁直流电机
Permanent magnet DC motor
- ★ 压接铜/铝导线端子
Crimp copper/aluminum wire terminals

型号(Model): SC-300A

产品重量 (Weight) :	4.2Kg
外观尺寸 (Size) :	350*270*72mm
压接时间 (Time/crimp) :	4s (CU150mm ²)
压接次数 (Time/crimp) :	300times (CU150mm ²)
储油量 (Oil storage capacity) :	166mL
最大压力 (Max pressure) :	70Mpa
最大行程 (Max stroke) :	17mm
最大出力 (Max output) :	65KN
压接范围 (Range of crimping) :	CU300mm ² /AL240mm ²
标配模具 (Crimping dies) :	16, 25, 35, 50, 70, 95, 120, 150, 185, 240, 300
电池 (Battery) :	18V 4Ah/5Ah
电池重量 (Battery weight) :	0.6Kg

充电式液压钳 Battery Crimping Tool



- ★ 电量显示
Power display
- ★ 计数显示
Counting display
- ★ 永磁直流电机
Permanent magnet DC motor
- ★ 压接铜/铝导线端子
Crimp copper/aluminum wire terminals

型号(Model): SC-400A

产品重量 (Weight) :	6.5Kg
外观尺寸 (Size) :	420*270*72mm
压接时间 (Time/crimp) :	8s (CU150mm ²)
压接次数 (Time/crimp) :	120times (CU150mm ²)
储油量 (Oil storage capacity) :	166mL
最大压力 (Max pressure) :	70Mpa
最大行程 (Max stroke) :	42mm
最大出力 (Max output) :	125KN
压接范围 (Range of crimping) :	CU400mm ² /AL300mm ²
标配模具 (Crimping dies) :	16, 25, 35, 50, 70, 95, 120, 150, 185, 240, 300, 400
电池 (Battery) :	18V 4Ah/5Ah
电池重量 (Battery weight) :	0.6Kg

充电式液压钳 Battery Crimping Tool

- ★ 电量显示
Power display
- ★ 计数显示
Counting display
- ★ 永磁直流电机
Permanent magnet DC motor
- ★ 压接铜/铝导线端子
Crimp copper/aluminum wire terminals

型号(Model): SC-300B

产品重量 (Weight) :	3.8Kg
外观尺寸 (Size) :	400*120*70mm
压接时间 (Time/crimp) :	5s (CU150mm ²)
压接次数 (Time/crimp) :	300times (CU150mm ²)
储油量 (Oil storage capacity) :	48mL
最大压力 (Max pressure) :	70Mpa
最大行程 (Max stroke) :	17mm
最大出力 (Max output) :	65KN
压接范围 (Range of crimping) :	CU300mm ² /AL240mm ²
标配模具 (Crimping dies) :	16, 25, 35, 50, 70, 95, 120, 150, 185, 240, 300
电池 (Battery) :	18V 3Ah/4Ah/5Ah
电池重量 (Battery weight) :	0.35/0.6Kg



充电式电缆剪 Battery powered cable cutting tool

作用:剪切铜/铝电缆/铠装电缆
Type of cable : Cu/Al Cable, light weight armoured Cu/Al cable

- ★ 电量显示
Power display
- ★ 计数显示
Counting display
- ★ 永磁直流电机
Permanent magnet DC motor



型号(Model): SC-85A

作用 (Use) :	剪切铜/铝电缆/铠装电缆
剪切范围(Cutting Diameter):	0-85mm
产品重量 (Weight) :	6.2Kg
外观尺寸 (Size) :	520*380*72mm
储油量 (Oil storage capacity) :	166mL
最大压力 (Max pressure) :	70Mpa
最大行程 (Max stroke) :	50mm
最大出力 (Max output) :	125KN
电池 (Battery) :	18V 4Ah/5Ah
电池重量 (Battery weight) :	0.6Kg

充电式电缆剪

Battery powered cable cutting tool

作用: 剪切铜/铝电缆
Type of cable : Cu/Al Cable

- ★ 电量显示
Power display
- ★ 计数显示
Counting display
- ★ 永磁直流电机
Permanent magnet DC motor

型号(Model): SC-30A

作用 (Use) :	剪切铜/铝电缆
剪切范围(Cutting Diameter):	0-30mm
产品重量 (Weight) :	4Kg
外观尺寸 (Size) :	440*120*70mm
储油量 (Oil storage capacity) :	48mL
最大压力 (Max pressure) :	70Mpa
最大行程 (Max stroke) :	24mm
最大出力 (Max output) :	65KN
电池 (Battery) :	18V 3Ah/4Ah/5Ah
电池重量 (Battery weight) :	0.35/0.6Kg



带锯

Band saw

- ★ 6档调速
6 speed control
- ★ LED灯
LED lights
- ★ 可配底座
The band saw can be used with metal base
- ★ 独创双开关独立控制
Original double switch independent control



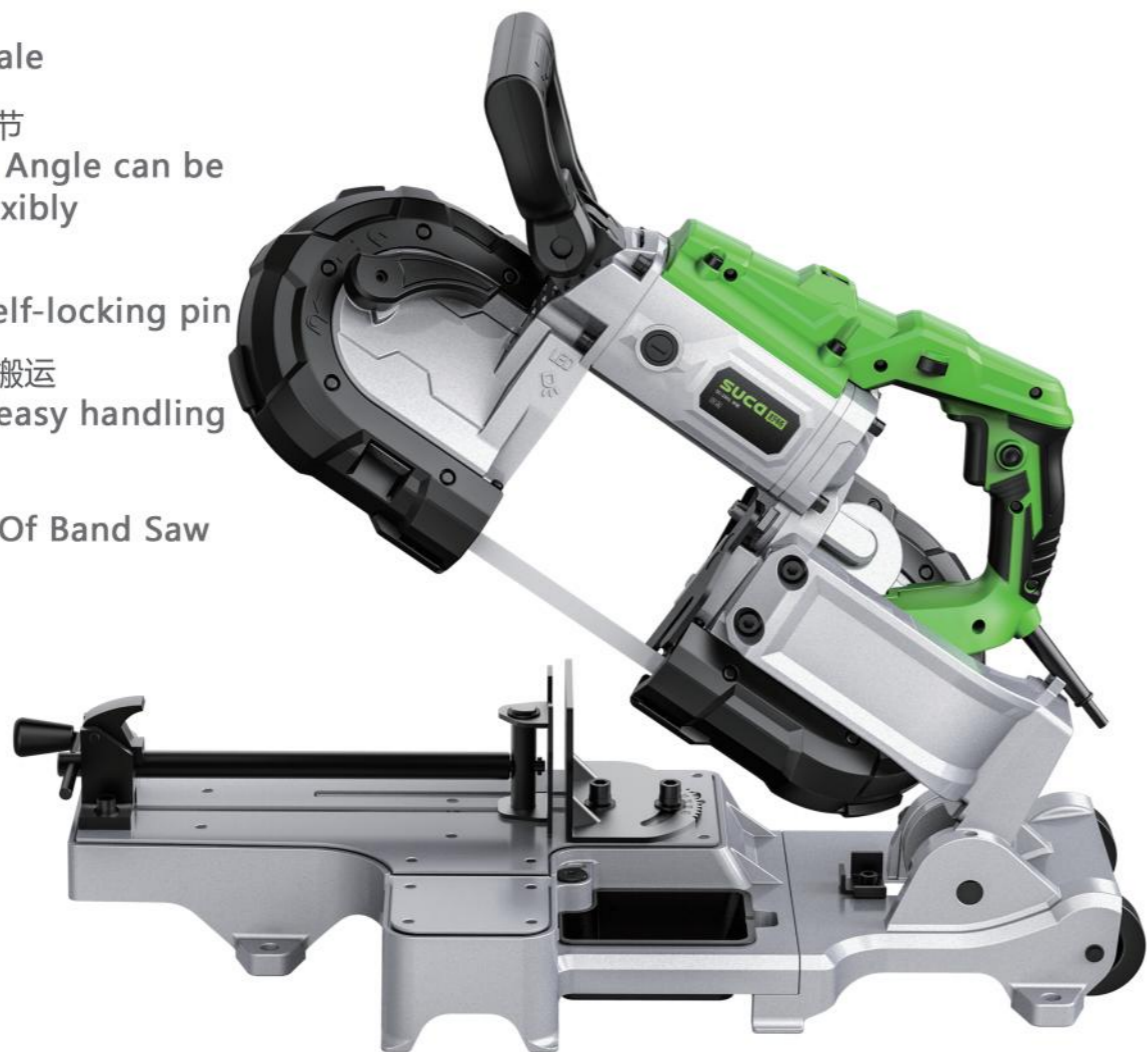
型号(Model): SC-2501

切割范围(Cutting Diameter):	120mm
额定功率 (Rated power) :	1100W
电压 (Voltage) :	220V-240V
额定频率 (Rated frequency) :	50/60Hz

- ★ 能快速锯各种钢、铝、复合电缆、角铁、钢管、实心钢、铝型材、PVC管、不锈钢
- ★ Can quickly saw all kinds of steel, aluminum, composite cable, angle iron, steel pipe, solid steel, aluminum profile, PVC pipe, stainless steel.

带锯底座 Metal Base Of Band Saw

- ★ 带切割刻度
Band cut scale
- ★ 切割角度可调节
The cutting Angle can be adjusted flexibly
- ★ 底座带自锁销
Base with self-locking pin
- ★ 带轮子, 方便搬运
Wheels for easy handling
- ★ 带锯底座
Metal Base Of Band Saw



型号(Model): SC-2501-T2

切割范围(Cutting Diameter): 圆管 (Round pipe) 110mm, 方管 (Square pipe) 105*105mm

电动番茄授粉器 Electric Tomato Pollinator



型号: SC-8701

直流电 (DC)	6V
功率 (P)	54W
转速 (SPEED)	4800r/min
毛重 (G.W/Ctn)	13.5kg
净重 (N.W/Ctn)	11kg
装箱数量 (Package)	6pcs
装箱尺寸 (Ctn size)	72*31*57cm

绑枝机 Electric tying machine

★ type-c充电
Type - C charging port



纸制扎带 Paper cable ties
型号(Model): SC-8804



PE扎带 PE cable tie
型号(Model): SC-8805

型号(Model): SC-9701

最大绑枝直径 (Tying Diameter)	45mm
额定功率 (Rated power)	5W
充电电压 (Charger feed voltage)	110-240V
锂电池 (Li-battery)	4.2V 2.5Ah
绑枝次数 (Times of tying)	6000 Times
机器重量 (Machine weight)	550g

绑枝机 Electric tying machine



纸制扎带 Paper cable ties
型号(Model): SC-8802



PE扎带 PE cable tie
型号(Model): SC-8803

型号(Model): SC-9601

最大绑枝直径 (Tying Diameter)	25mm
额定功率 (Rated power)	60W
充电电压 (Charger feed voltage)	110-240V
锂电池 (Li-battery)	16.8V 2Ah/4Ah
绑枝次数 (Times of tying)	7500/15000 Times
锂电池重量 (Battery Weight)	260/360g
机器重量 (Machine weight)	850g

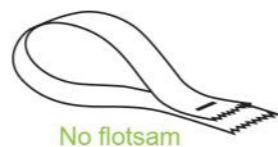
绑枝机 Hand tying machine

- ★ 重量减轻20%
Weight reduction by 20%
- ★ 省力减轻50%
Labor-saving 50%
- ★ 操作简单, 无需技巧
Simple operation without skill
- ★ 一体推针, 防丢失
Integrated pusher, won't be lost
- ★ 前置钉槽, 不卡钉
Front slot, no staple jamming



型号(Model): SC-8108

毛重 (G.W/Ctn)	12kg
净重 (N.W/Ctn)	11kg
装箱数量 (Package)	20pcs
装箱尺寸 (Ctn size)	38*28.5*39.5cm



绑枝机 Tapetool

It can fix the vine of plant such as tomato, cucumber, grape, capsicum ect and gardening.



型号(Model): SC-8101

毛重 (G.W/Ctn)	14kg
净重 (N.W/Ctn)	13kg
装箱数量 (Package)	20pcs
装箱尺寸 (Ctn size)	38*28.5*36cm



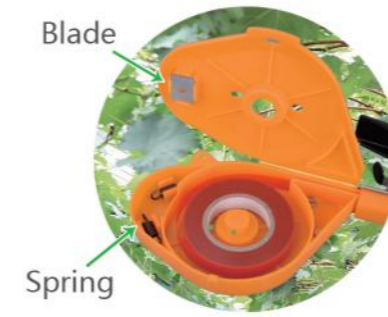
绑枝机 **Tapetool**



绑枝机 **Tapetool**



料盒内可装刀片和弹簧



No flotsam

型号(Model): SC-8102

毛重 (G.W/Ctn)	14kg
净重 (N.W/Ctn)	13kg
装箱数量 (Package)	20pcs
装箱尺寸 (Ctn size)	38*28.5*36cm



No flotsam

型号(Model): SC-8104

毛重 (G.W/Ctn)	14kg
净重 (N.W/Ctn)	13kg
装箱数量 (Package)	20pcs
装箱尺寸 (Ctn size)	41*38*29cm

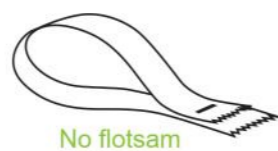
SUCO 舒畅

MAKE YOUR WORK EASIER

绑枝机 Tapetool



手感更轻、节省刀片
Blade Saving



型号(Model): SC-8105

毛重 (G.W/Ctn)	14kg
净重 (N.W/Ctn)	13kg
装箱数量 (Package)	20pcs
装箱尺寸 (Ctn size)	38*28.5*37.5cm

SUCO 舒畅

MAKE YOUR WORK EASIER

绑枝机 Tapetool



型号(Model): SC-8106

毛重 (G.W/Ctn)	15.5kg
净重 (N.W/Ctn)	14.5kg
装箱数量 (Package)	20pcs
装箱尺寸 (Ctn size)	42.5*34.5*38cm

绑枝机 Tapetool



型号(Model): SC-8107

毛重 (G.W/Ctn)	14kg
净重 (N.W/Ctn)	13kg
装箱数量 (Package)	20pcs
装箱尺寸 (Ctn size)	38*28.5*36cm



绑枝机耗材 Consumables



型号: SC-8908
刀片 Blade



型号: SC-8909
弹簧 Spring



型号(Model): SC-8801-1

绑枝机胶带 Tape for Tapetool

毛重 (G.W/Ctn)	20kg
净重 (N.W/Ctn)	19kg
装箱数量 (Package)	500pcs
装箱尺寸 (Ctn size)	38*38*25cm



型号(Model): SC-8801-2

绑枝机胶带 Tape for Tapetool

毛重 (G.W/Ctn)	20kg
净重 (N.W/Ctn)	19kg
装箱数量 (Package)	500pcs
装箱尺寸 (Ctn size)	38*38*25cm

型号(Model): SC-8901

绑枝机钉子 Staples for Tapetool

毛重 (G.W/Ctn)	18kg
净重 (N.W/Ctn)	17kg
装箱数量 (Package)	100pcs
装箱尺寸 (Ctn size)	25*21*29cm



型号(Model): SC-8801-3

绑枝机胶带 Tape for Tapetool

毛重 (G.W/Ctn)	20kg
净重 (N.W/Ctn)	19kg
装箱数量 (Package)	500pcs
装箱尺寸 (Ctn size)	38*38*25cm



型号(Model): SC-8801-4

绑枝机胶带 Tape for Tapetool

毛重 (G.W/Ctn)	20kg
净重 (N.W/Ctn)	19kg
装箱数量 (Package)	500pcs
装箱尺寸 (Ctn size)	38*38*25cm

嫁接剪
Grafting Tool



型号(Model): SC-8251

刀片 Blade



型号(Model): SC-8281

嫁接膜 Tape for Grafting tool



型号(Model): SC-8201

毛重 (G.W/Ctn)	8kg
净重 (N.W/Ctn)	7kg
装箱数量 (Package)	20pcs
装箱尺寸 (Ctn size)	60*29*17cm



型号(Model): SC-8202

毛重 (G.W/Ctn)	12kg
净重 (N.W/Ctn)	11kg
装箱数量 (Package)	20pcs
装箱尺寸 (Ctn size)	42*26*31cm



型号(Model): SC-8203

毛重 (G.W/Ctn)	14kg
净重 (N.W/Ctn)	13kg
装箱数量 (Package)	20pcs
装箱尺寸 (Ctn size)	48.5*28*30cm

嫁接剪
Grafting Tool



型号(Model): SC-8831

刀片 Blade



型号(Model): SC-8231

毛重 (G.W/Ctn)	13.5kg
净重 (N.W/Ctn)	13kg
装箱数量 (Package)	20pcs
装箱尺寸 (Ctn size)	53*38*36cm



